



SECURED ENGINEERS PRIVATE LIMITED

“Transforming Projects, Making India Proud”

14+

YEAR

16+

STATES

4+

COUNTRIES

535+

PROJECTS

309+

TEAM STRENGTH

89.77%

REPEATED CLIENTS

113880+

SAFETY HOURS

"BEHOLD THE BRILLIANT VISIONARY WHO IGNITED OUR JOURNEY TO GREATNESS!"



Ankur Kaplesh

Role: Founder and Managing Director of Secured Engineers Pvt. Ltd.

Experience: 16 years in the industry.

Expertise: Specializes in precision, efficiency, and client satisfaction.

Authorship:

Wrote "11 Deadly Facts to Save up to 27% & Complete Your Project on Time".

The book reflects the company's unique business approach and commitment to methodical and diligent work.

Company Impact:

Secured Engineers Pvt. Ltd.

Served over 535 Projects

Achieved business revenue savings of Rs 11,796 Crores.

Renowned for rapid project completion, including a warehouse project finished in just 37 days.

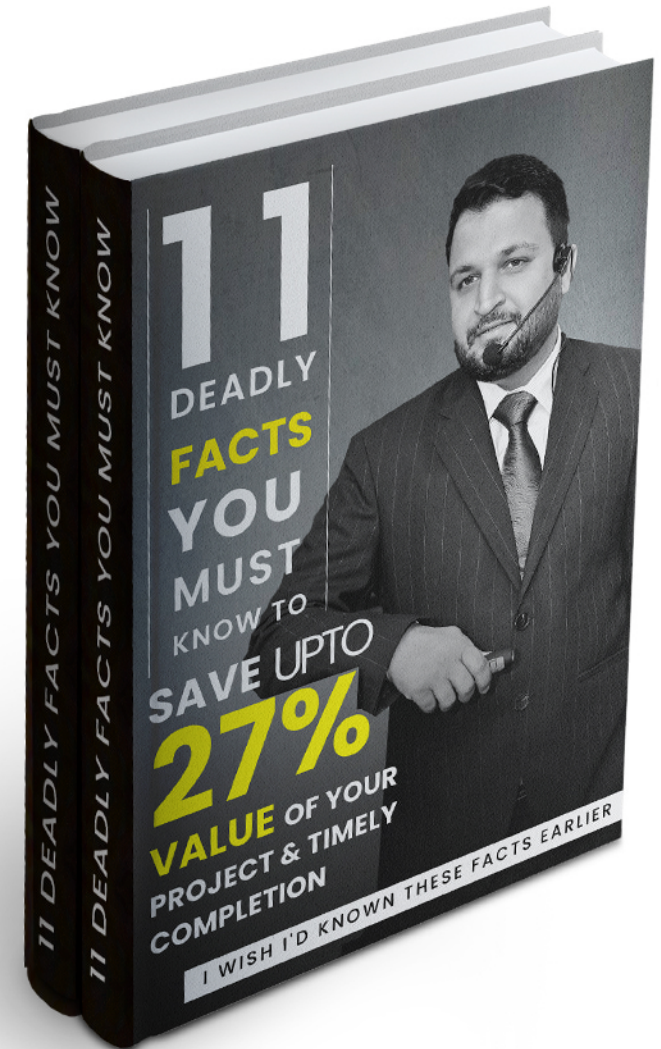
Notable Clients:

Airtel, Dabur, Fortis Hospitals, Microtek, Indian Army, UB Group & many more.

Company Mission:

Committed to delivering the highest quality service.

Focuses on enhancing the success of client projects through superior solutions.



"DISCOVER OUR VISION, RIDE ALONG OUR MISSION AND FEEL OUR CORE VALUES"



VISSION

To become India's leading engineering and contracting firm, revolutionizing infrastructure with cutting-edge technology and making India a global leader in infrastructure development.

MISSION

To enhance the contracting process by making it smooth, organized, and transparent, ensuring timely delivery. We aim to empower the next generation of engineers with continuous learning and innovation, boosting national infrastructure and pride. Our goal is to grow into a \$1.22 billion company by 2034, leading the way in infrastructure development and setting new standards in the industry.

VALUES



INTEGRITY

Upholding transparency and honesty in all our dealings.



EXCELLENCE

Commitment to the highest standards in every project.



COMMITMENT

Pledging unwavering commitment to our clients, our team, and our objectives, creating lasting partnerships and promoting mutual growth.



INNOVATION

Embracing new solutions to enhance efficiency and sustainability.

WHY CLIENTS LOVE US ?



EMPOWERING GAIANTS ACROSS INDUSTRIES

FROM NATIONAL DEFENCE TO GLOBAL INNOVATION



1 Elite Fire Safety:
Guarded India's biggest petroleum depot - Proud partners with the Indian Army.



Urban Innovators:
Shaping Sector 32 & 43 CHD's skyline as the government's chosen consultants.

2

3 Tech Pioneers:
Electrifying TATA International's projects with cutting-edge electrical & mechanical expertise.



Global MEP Visionaries:
Infused NXP's Dutch innovation hub with our bespoke MEP designs.

4

5 Logistics Leaders:
Steering Nahar Logistics towards operational excellence.



CORPORATE SOCIAL RESPONSIBILITY



- **Sustaining Lives:**

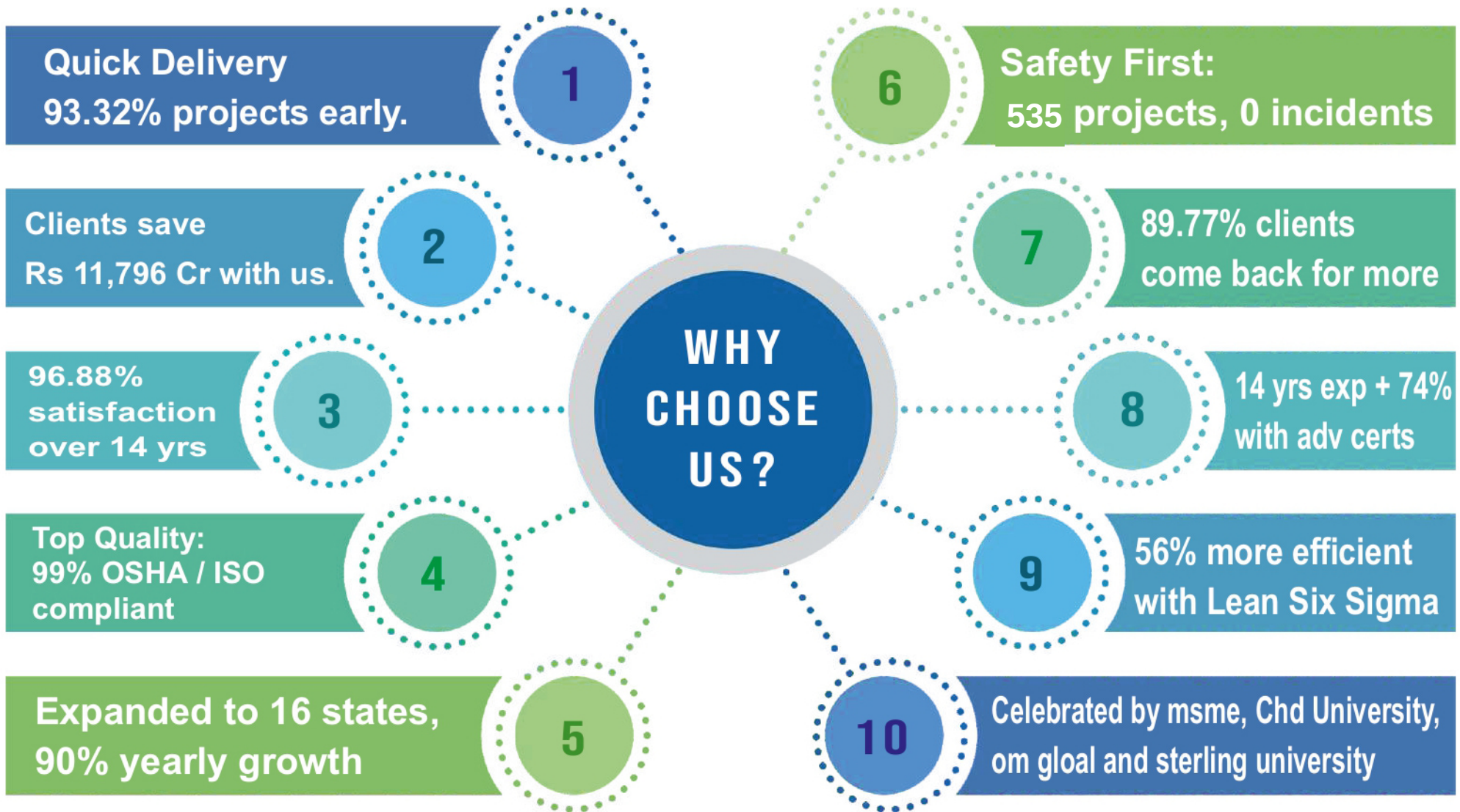
Our initiative strives to provide essential grocery items to numerous struggling households on a regular basis so they can focus on building a better life from scratch.

- **Elevating Education:**

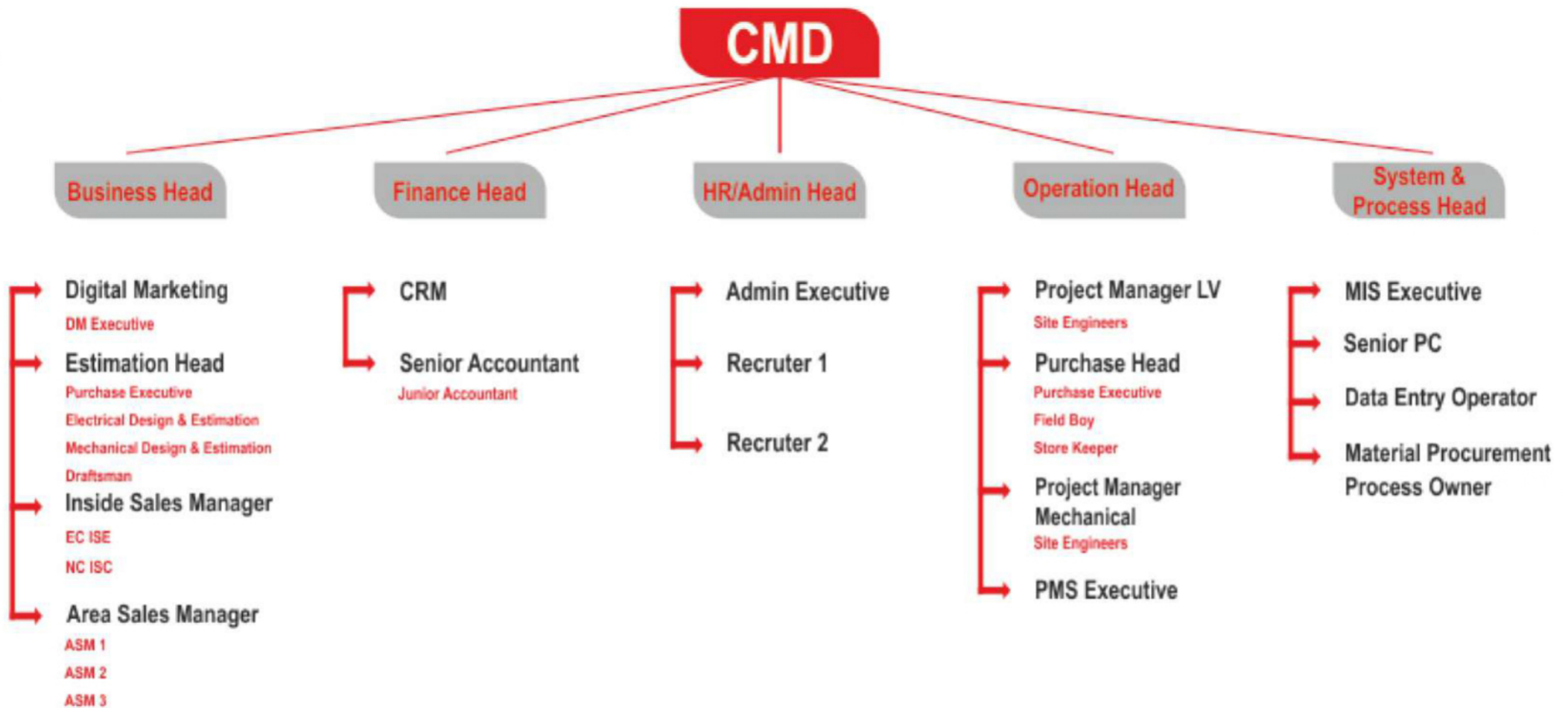
We believe that education is the foundation for a promising future. That's why we have committed to covering the tuition fees for underprivileged children across various communities. Our aim is not just to lift a few but to uplift many, setting the stage for a generation that can break the cycle of poverty.

- When you engage with Secured Engineers Pvt. Ltd., you're not merely investing in a service provider; you're investing in a vision that nurtures both infrastructure and the human spirit. By choosing us, you're helping to make these impactful CSR initiatives possible. Your trust enables us to continue these meaningful programs that touch countless lives every day.
- This isn't just about us. It's about creating a ripple effect that brings positive change, going beyond the realm of business to a more compassionate, humane plane. Partnering with us means making a conscious choice for social impact—touching lives, empowering communities, and fostering shared growth.

WHY CHOOSE US ?



ORGANIZATIONAL CHART



COMPLIANCE AND LEGAL OBLIGATIONS

ENSURING STATUTORY INTEGRITY



Name of Company	Secured Engineers Private Limited
Head Office	2480/1, BK Tower, Gill Road, Ludhiana, 141003
Corp. Office	91 Spring Board D-107 Noida sec 2, UP 201301
CMD & Founder	Er. Ankur Kaplesh
Email	sales@securedengineers.com
Place of Business	INDIA
Status	Private Limited Company
Year of Establishment	2011
Corporate ID No.	U31900PB2013PTPTC037158
MSME Certified	PB12D0006767
EPF	U31900PB2013-PTC037158 10-06-15
ESI	26000491050000999 DT 24-6-2015
PAN	AASCS7836D
GST	03AASCS7836D2Z3
IEC CODE	3013001461
ISO Certified	9001 2015

OUR ACHIEVEMENTS



14+

Years

16+

States

4+

Countries

535 +

Projects

309+

Team Strength

89.77%

Repeated Clients

103880 +

Safety Hours



“ZOOMING IN OUR IDEAL CLIENTS AND TARGET MARKETS”



Banking



Education



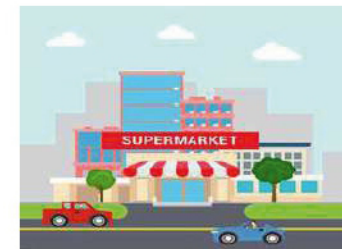
Airport



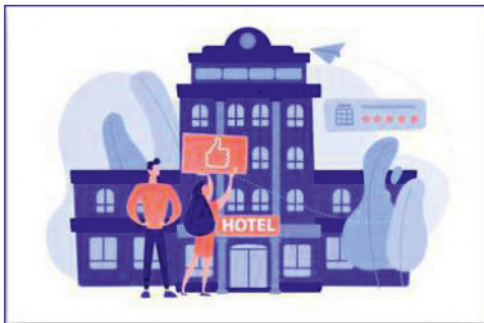
Hospitals



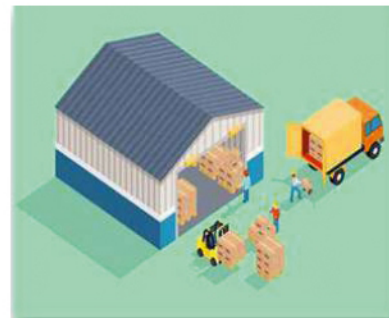
Real Estates



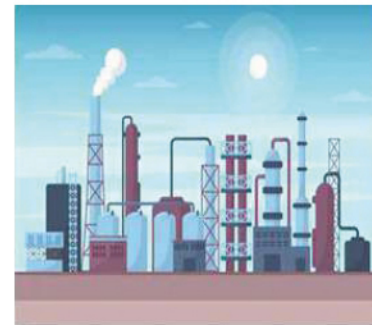
Retail Outlets



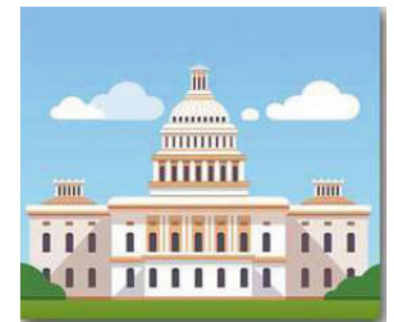
Residential



Distribution Warehouse



Industries



GOVT Bodies

CLIENTS IN GOVT. SECTOR



CLIENTS IN INDUSTRIAL SECTOR



HERO CYCLES logo featuring a shield with a 'H' and 'HERO' text, and the words 'HERO CYCLES' in red.	UB logo featuring a blue winged horse silhouette above the letters 'UB' in blue.	HEROecotech logo featuring a red and white circular icon with a stylized 'W' and the text 'HEROecotech'.	NAYASA logo featuring the word 'NAYASA' in black with a stylized 'A' in red and blue.	BCS group logo featuring a stylized 'S' in blue and orange, followed by 'BCS group' in blue.
ABD Allied Blenders & Distillers logo featuring a red circle with 'ABD' in white and the text 'Allied Blenders & Distillers' below.	BOUDH DISTILLERY logo featuring a green circular emblem with 'BOUDH' at the top, 'DISTILLERY' at the bottom, and a stylized 'bd' in the center.	TATA CONSUMER PRODUCTS logo featuring the text 'TATA CONSUMER PRODUCTS' in blue.	Crop Chemicals logo featuring a green leaf icon and the text 'Crop Chemicals'.	METRO logo featuring a red circle with 'METRO' written vertically in white.
GRAINSPAN Source of Nutrition logo featuring a yellow and green grain icon and the text 'GRAINSPAN Source of Nutrition'.	LUMINOUS Enjoy Technology logo featuring the text 'LUMINOUS Enjoy Technology' in blue.	Dabur logo featuring a green tree icon and the text 'Dabur' in green.	kangaroo logo featuring a blue globe icon and the text 'kangaroo Stay Sorted.'.	KVTEK logo featuring a blue triangle with white stripes and the text 'KVTEK DEFINING QUALITY'.

CLIENTS IN INDUSTRIAL SECTOR



The logo for CONSERN, featuring the word 'CONSERN' in a blue, sans-serif font, with a green and blue swoosh above and below the text.	The logo for TEMPLE Packaging Pvt. Ltd., featuring the word 'TEMPLE' in a large, green, bold, sans-serif font, with 'Packaging Pvt. Ltd.' in a smaller, black, sans-serif font below it.	The logo for GREEN GARDEN, featuring the words 'GREEN GARDEN' in a green, bold, sans-serif font, with two green leaves above the 'E' in 'GREEN'. Below the text is the tagline 'The glory of gardening' in a smaller, black, sans-serif font.	The logo for SAEL, featuring the word 'SAEL' in a large, bold, sans-serif font, with 'S' in purple and 'AEL' in red. Below the text is the tagline 'SUSTAINABLE & AFFORDABLE ENERGY FOR LIFE' in a smaller, black, sans-serif font.	The logo for V-GUARD, featuring the words 'V-GUARD' in a yellow, bold, sans-serif font, with a yellow silhouette of a kangaroo to the right.
The logo for AYKAI HOSPITAL, featuring a red shield with a white cross and a white eagle, with the words 'AYKAI HOSPITAL' in a blue, bold, sans-serif font to the right. Below the text is the tagline 'COMPASSION, COMMITMENT, TRUST' in a smaller, black, sans-serif font.	The logo for PE PRIME ENGINEERS, featuring the letters 'PE' in a large, bold, sans-serif font, with 'PRIME ENGINEERS' in a smaller, black, sans-serif font to the right. Below the text is the tagline 'GOVT. APPROVED MEP CONTRACTOR & CONSULTANTS' in a smaller, black, sans-serif font.	The logo for PES ENGINEERS PVT. LTD., featuring the letters 'PE' in a large, bold, sans-serif font, with 'S' in a smaller, bold, sans-serif font to the right. Below the text is the tagline 'Project Construction is our forte' in a smaller, green, sans-serif font.	The logo for THEON PHARMACEUTICALS LTD, featuring a stylized blue and red figure above the word 'THEON' in a large, bold, sans-serif font, with 'PHARMACEUTICALS LTD' in a smaller, black, sans-serif font below it.	The logo for Cheese Bazar, featuring the words 'Cheese Bazar' in a blue, bold, sans-serif font, with 'Choudhery's' in a smaller, black, sans-serif font above it and 'Since 1986' in a smaller, black, sans-serif font below it.

CLIENTS IN INDUSTRIAL SECTOR



CLIENTS IN EDUCATION SECTOR



Punjab Board
Board of Secondary Education, Punjab



CANAM 
options abroad



CLIENTS IN HEALTHCARE AND HOSPITALITY SECTOR



 <p>PGI</p>				
 <p>HYATT REGENCY®</p>	 <p>Park Plaza Hotels & Resorts</p>	 <p>park inn by Radisson</p>	 <p>ARAIYA PALAMPUR</p>	 <p>AAGAAZ For Luxury Stay & Celebration</p>
 <p>NIRVANA Luxury Hotel Ludhiana</p>	 <p>HOTEL NAGPAL REGENCY</p>	 <p>keys HOTELS</p>		

CLIENTS IN INFRA SECTOR



 <p>SANGAL constructions</p>	 <p>RKS</p> <p>Raj Kamal Square Mall</p>	 <p>DEEPAK BUILDERS & DEVELOPERS</p>	 <p>Punj Lloyd</p>	 <p>SAM INDIA BUILT WELL PVT. LTD</p>
 <p>Shapoorji Pallonji</p>	 <p>SSWML</p>	 <p>CTIL Pursuit with Excellence CEIGALL INDIA LIMITED</p>	 <p>City MALL</p>	 <p>SUN VIEW ENCLAVE</p>
		 <p>GRAND WALK</p>		

**CLIENTS IN TELECOM AND
MEDIA SECTOR**



ELECTRICAL SERVICES



Electrical Contracting Services



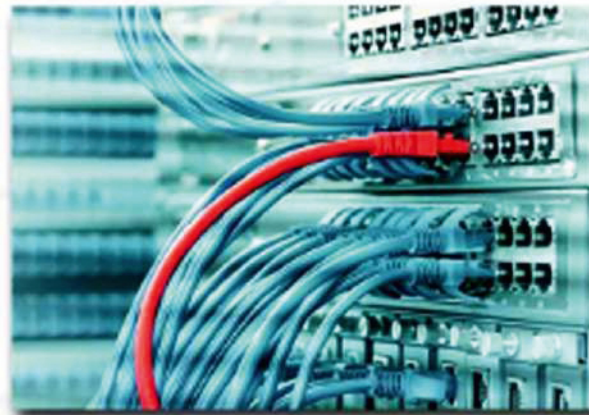
Electrical Panel Services



LT/HT Cable Laying



Earthing Work



Networking Cable



Cable Tray Installation

MAKE YOUR SPACE FIRE PROOF (PRESERVE WHAT'S PRECIOUS)



Fire Hydrant System



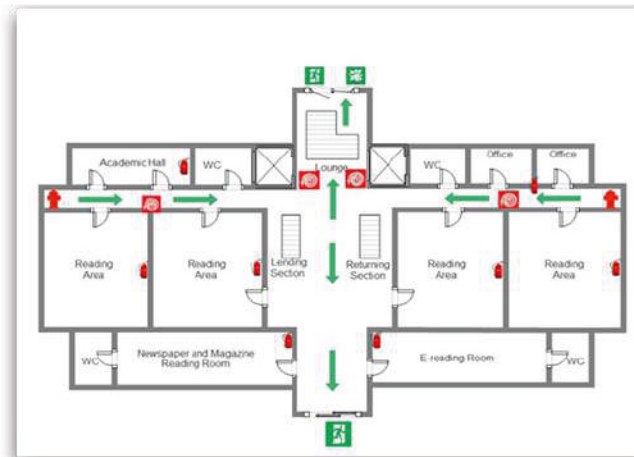
Fire Sprinkler System



Fire Suppression System



Fire Alarm System



Fire Evacuation Plan



Fire Extinguishers

LOW VOLTAGE SERVICES



CCTV CAMERA



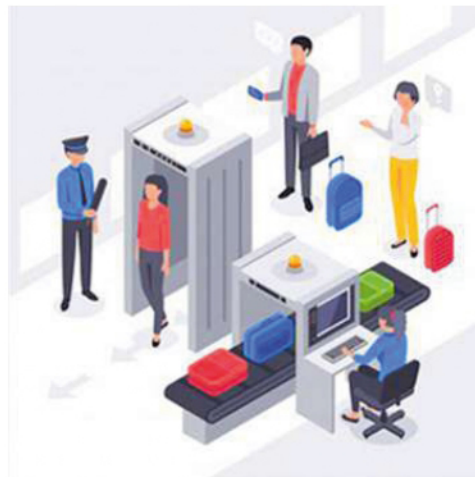
SECURITY ALARM SYSTEM



EPABX SYSTEM



Boom Barrier



X-Ray Baggage Scanner



PA System

SOLAR

FROM SUN TO SOCKET

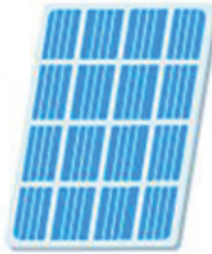


Monocrystalline



- £ Most expensive
- ⚡ Highest efficiency
- 🕒 Lasts 25-40 years
- 👁️ Black colour

Polycrystalline



- £ Moderately priced
- ⚡ Medium efficiency
- 🕒 Lasts 25-35 years
- 👁️ Blue colour

Thin-Film



- £ Least expensive
- ⚡ Lowest efficiency
- 🕒 Lasts 10-20 years
- 👁️ Panel colour varies



Solar EPC
(Utility Scale & Rooftop)



Hybrid System

Trusted Brand :





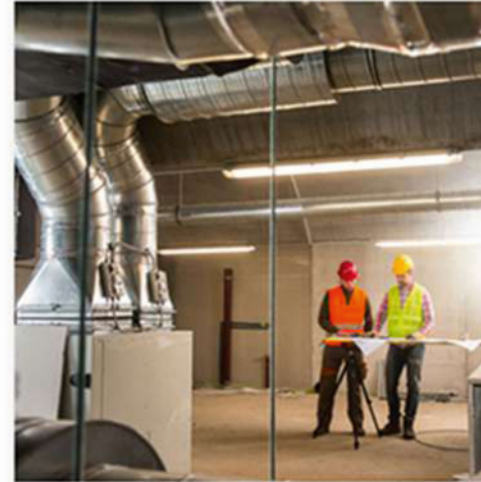
Air Conditioning

Air Conditioning Installation, Repair & Reactive Maintenance. HVAC in Greater London & across the South East



HVAC

The Secured Engineers M&E team run full HVAC commercial projects. A project manager is appointed to oversee all aspects.



Heating

Stand alone heating systems or HVAC solutions for larger commercial premises in London & across the South East.



Ventilation

Ventilation Commercial ventilation solutions with mechanical heat recovery (MVHR) perfect for offices, restaurants & more

AIR CONDITIONING

HVAC

HEATING

VENTILATION

PLUMBING



Tap, Wash basin, Kitchen Sink



Water Tank Solutions



Pipe lines And Pumps



All Types Plumbing Solutions

Full MEP Design & Installatn Works

We are able to undertake complex MEP design and build projects at any level, up to major Government, Commercial and Industrial sector projects with high.

We offer a full MEP design and build service for our clients using the most innovative and energy efficient products to provide state-of-the-art installations which save both time and cost throughout the construction phase and provide a cost effective and maintainable end product to our clients.



Maintenance and After Sales Works

We are a highly successful maintenance services company and our goal is to ensure long-term performance, reliability, and safety of all installed systems.

Build UP MEP Trusted by a diverse range of clients, across many business sectors, we deliver the highest quality support to critical operational facilities. We provide both reactive and planned preventative maintenance services across a range of market sectors including banking and finance, industrial, commercial, pharmaceutical and retail.



OUR GOVT. LICENSED SERVICES



FIRE NOC



NET METERING



TRANSFORM DG CLEARING

OUR OVERSEAS CLIENTS



Quality is not an act, it is a habit

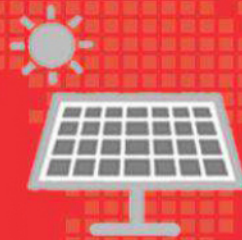
From Consultancy to Execution **WE ARE WITH YOU**



Electrical Services



Fire Fighting Services



Solar Services



HVAC



Low Voltage Services



SECURED ENGINEERS PVT. LTD.

SECURED ENGINEERS PVT. LTD.

Head Office: #2480/1, BK Towers, New Janta Nagar, Gill Road, Ludhiana 141003

Corporate Office: 91 Spring Board D-107 Noida sec 2, UP 201301

E-mail: customercare@securedengineers.com

www.securedengineers.com

Follow us on:      